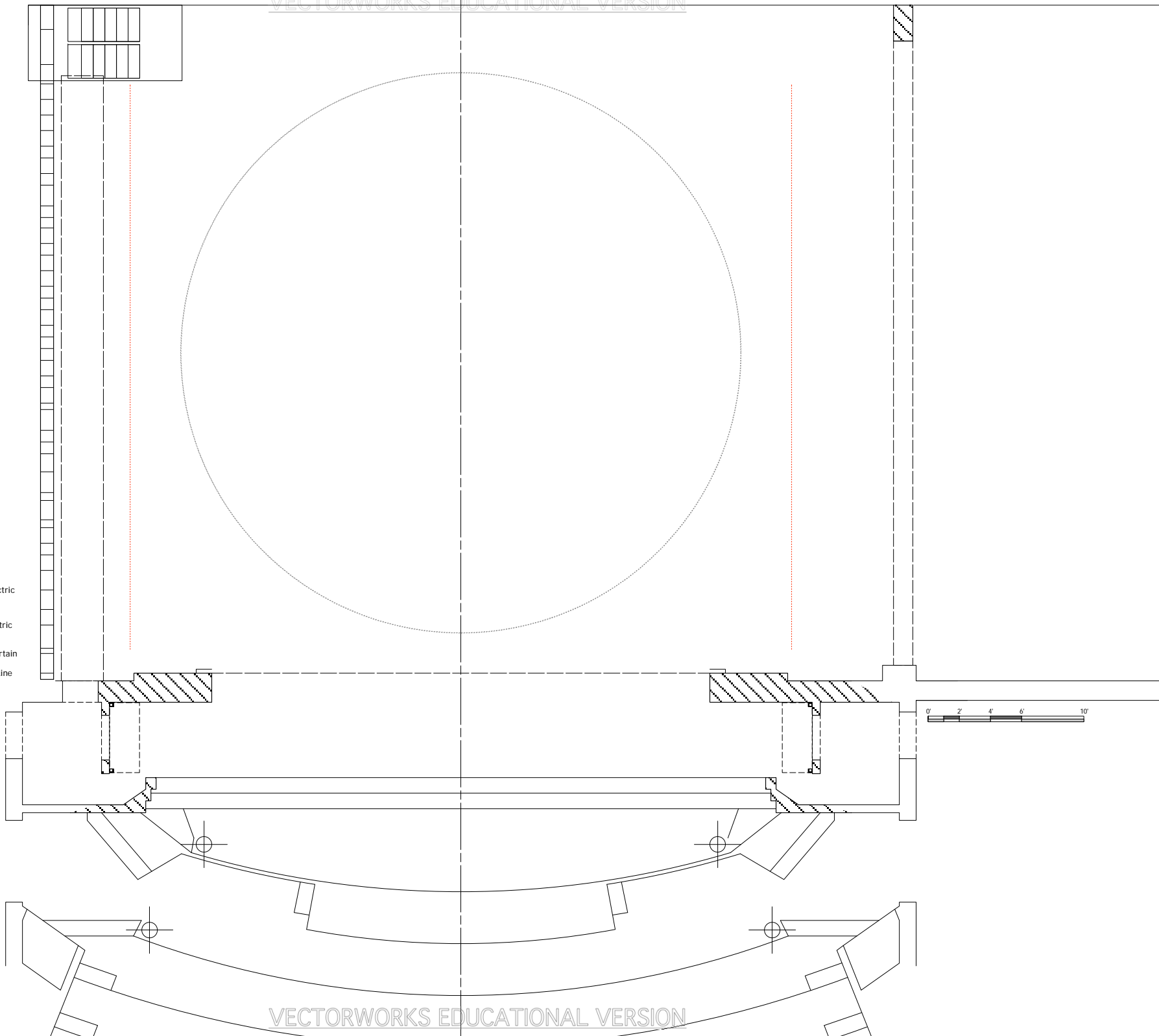
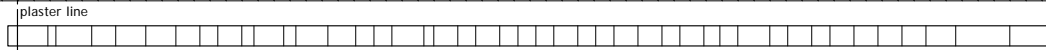
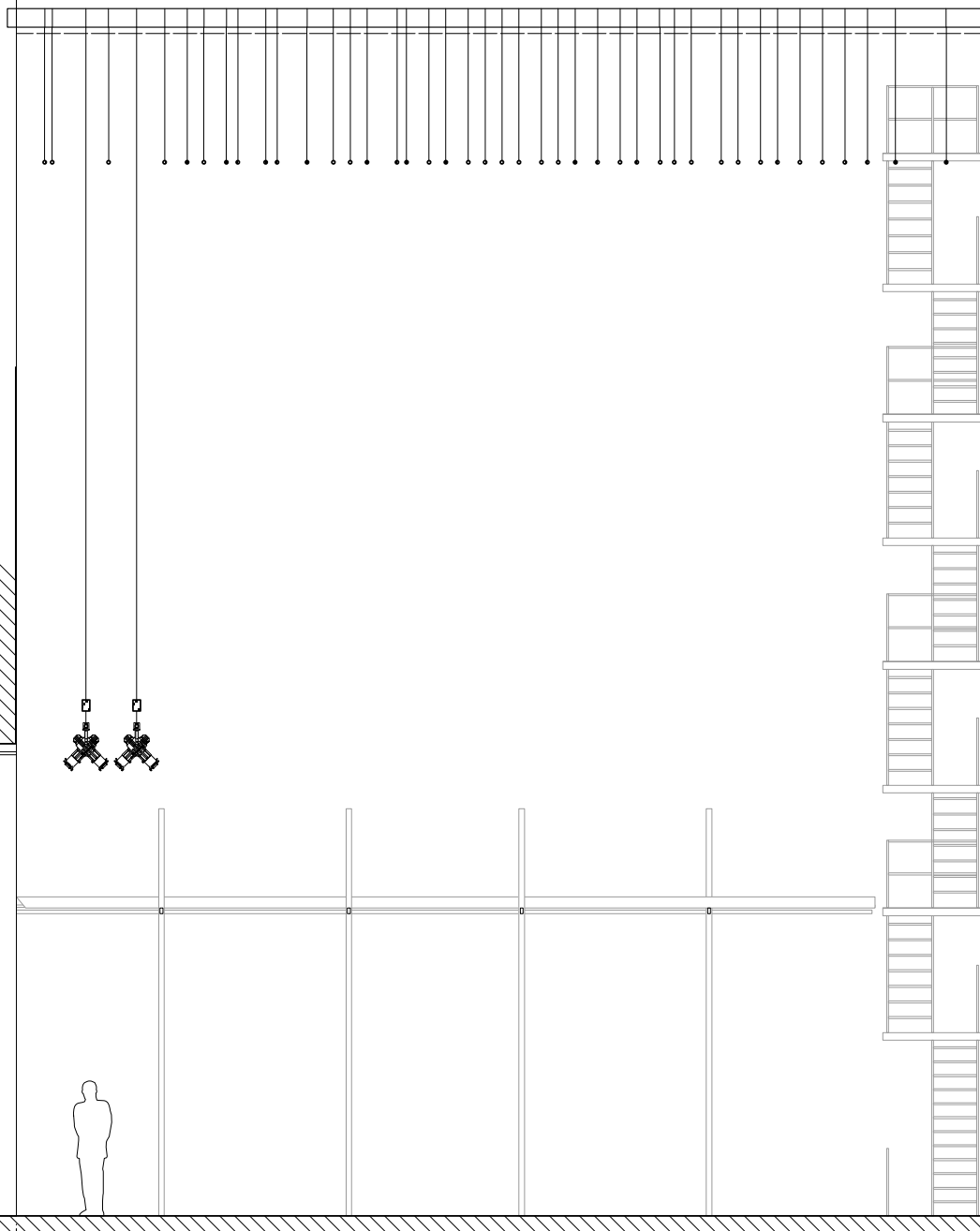


- 43: open
- 42: open
- 41: open
- 40: open
- 39: open
- 38: open
- 37: open
- 36: open
- 35: open
- 34: open
- 33: open
- 32: open
- 31: open
- 30: open
- 29: open
- 28: open
- 27: open
- 26: open
- 25: open
- 24: open
- 23: open
- 22: open
- 21: open
- 20: open
- 19: open
- 18: open
- 17: open
- 16: open
- 15: open
- 14: open
- 13: open
- 12: open
- 11: open
- 10: open
- 9: open
- 8: open
- 7: open
- 6: open
- 5: 2nd Electric
- 4: open
- 3: 1st Electric
- 2: Teaser
- 1: Main Curtain
- Plaster Line



- 43: open
- 42: open
- 41: open
- 40: open
- 39: open
- 38: open
- 37: open
- 36: open
- 35: open
- 34: open
- 33: open
- 32: open
- 31: open
- 30: open
- 29: open
- 28: open
- 27: open
- 26: open
- 25: open
- 24: open
- 23: open
- 22: open
- 21: open
- 20: open
- 19: open
- 18: open
- 17: open
- 16: open
- 15: open
- 14: open
- 13: open
- 12: open
- 11: open
- 10: open
- 9: open
- 8: open
- 7: open
- 6: open
- 5: 2nd Electric
- 4: open
- 3: 1st Electric
- 2: Teaser
- 1: Main Curtain



Batton High Trim: 52'-7"

+40'-0" / match line  
 8'-0" ds of pl

Cove

FOH Boom 1

FOH Boom 2

plaster line