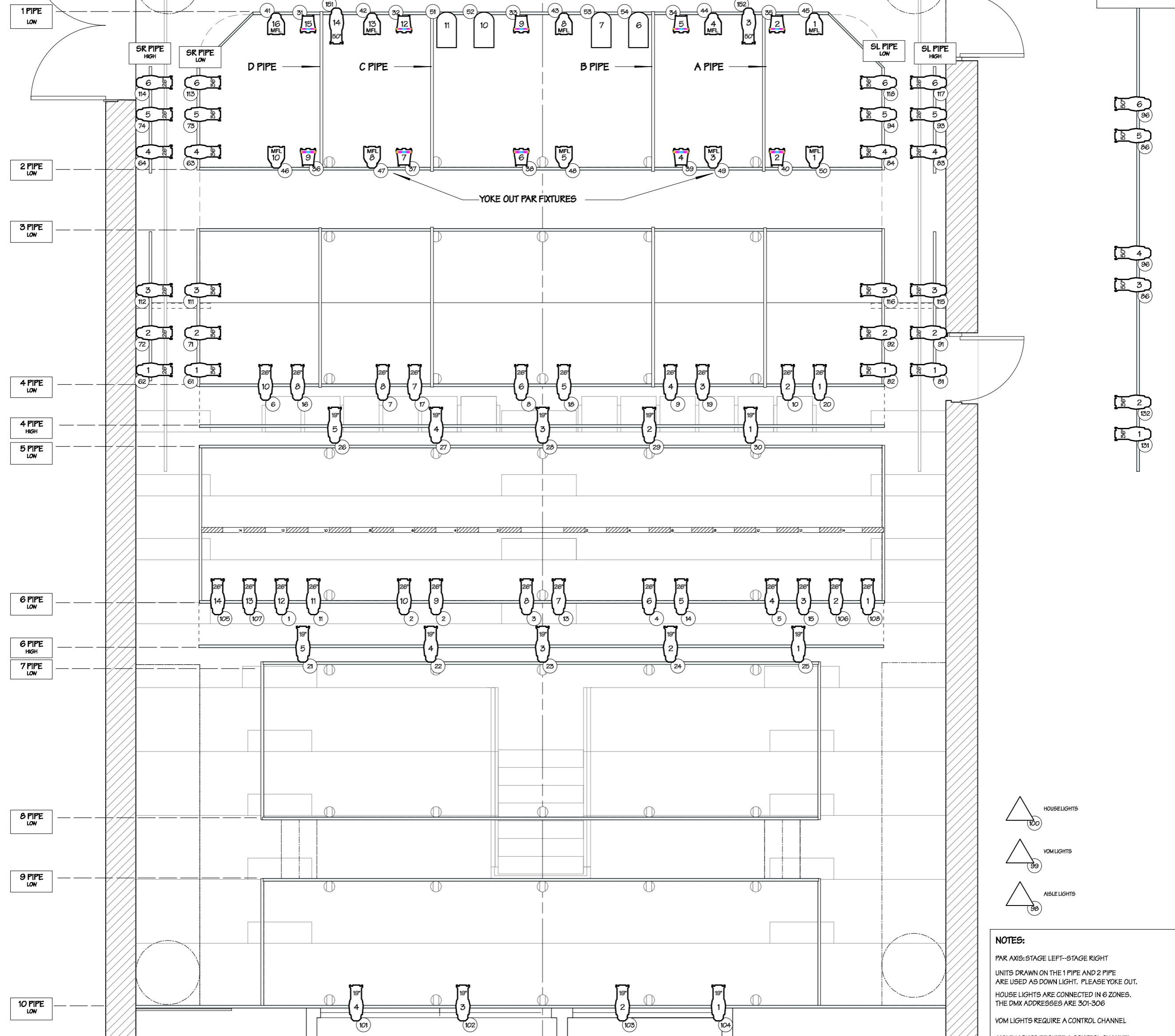


BELOW CATWALK PIPE
PERMANENTLY LED FIXTURES

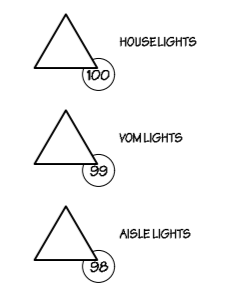
TAB STAGE RIGHT
TRM @ +12'-0"

TAB STAGE LEFT



YOKE OUT PAR FIXTURES

1 PIPE LOW
2 PIPE LOW
3 PIPE LOW
4 PIPE LOW
4 PIPE HIGH
5 PIPE LOW
6 PIPE LOW
6 PIPE HIGH
7 PIPE LOW
8 PIPE LOW
9 PIPE LOW
10 PIPE LOW



NOTES:

PAR AXIS: STAGE LEFT--STAGE RIGHT

UNITS DRAWN ON THE 1 PIPE AND 2 PIPE ARE USED AS DOWN LIGHT. PLEASE YOKE OUT.

HOUSE LIGHTS ARE CONNECTED IN 6 ZONES. THE DMX ADDRESSES ARE 301-306

VOM LIGHTS REQUIRE A CONTROL CHANNEL

AISLE LIGHTS REQUIRE A CONTROL CHANNEL

ALLOWABLE CHANGES TO THE REP PLOT INCLUDE

- SHUTTER CUTS
- BARREL ADJUSTMENTS FOR SHARPNESS

ONLY CHANNELS 21 THRU 30 AND 101-104 MAY BE REFOCUSSED

BACKLIGHT PAR FOCUS IS INVERTED IN ORDER TO ACHIEVE THE BEST COVERAGE

SYMBOLS

- 1kw PAR WFL
- 575w 50° SRC4
- 107w COLORSOURCE MFL ROUND
REQUIRED (1) 180V/2A NON-DIM CIRCUIT
- 750w SRC4 PAR WFL
- 575w 36° SRC4
- 180w COLORADO
REQUIRED (1) 180V/2A NON-DIM CIRCUIT
- 750w SRC4 PAR MFL
- 575w 26° SRC4
- 750w 6° FRESNEL
- 575w 18° SRC4
- 850w COLORBLAZE TRX LED
REQUIRED (1) 180V/4A NON-DIM CIRCUIT

UNIVERSITY OF IOWA PRESENTS
ALAN MACVEY THEATRE

PLATE 1 OF 1

REP LIGHT PLOT

DIRECTED BY

DESIGN BY

LIGHTING BY

ALAN MACVEY THEATRE

SCALE: 1/4" = 1' - 0"

REVISED 07/01/19